

# LAVRAS GOLD

**EXPLORING**  
**TO REALIZE POTENTIAL OF A**  
**MULTI-MILLION OUNCE**  
**GOLD DISTRICT**  
**IN SOUTHERN BRAZIL**





# READ THE FINE PRINT

## DISCLAIMER

Lavras Gold Corp. has prepared this slide deck for information purposes only. When you accept this slide deck, you agree that it is provided for information purposes only. Lavras Gold, which owns this slide deck, has taken all reasonable care to ensure that the facts in the slide deck are true to the best of its knowledge, information, and belief. Without prejudice to the foregoing, neither Lavras Gold, its advisers, or its representatives accept any liability for any direct or indirect loss that arises from using this slide deck or the information it contains.

This slide deck is directed at someone who:

- has professional experience in investment matters because they are an investment professional, as defined in Article 19(5) of the *Financial Services and Markets Act 2000 (Financial Promotion) Order 2001* (FPO)
- are high net worth companies, unincorporated associations, and others defined in Article 49 of the FO
- Is anyone else that may lawfully receive communications like this.

If you do not have professional experience in investment matters, do not act or rely on this slide deck or any of its contents. Do not rely on the information or opinions in this slide deck or assume that it is complete. No liability is accepted for any loss that comes from using this slide deck or its contents. We encourage prospective investors to do their own due diligence, and independently verify the information.

This slide deck is not a prospectus or part of a prospectus on Lavras Gold. It is not an invitation or offer to underwrite, subscribe for, acquire, or dispose of any shares in Lavras Gold. It does not advise any person in any jurisdiction, and should not form part of a contract, or be relied on in any connection to any contract. Distributing this slide deck may be restricted by law in certain jurisdictions. You should inform yourself about these restrictions and follow them. If you do not follow these restrictions, you may be breaking the law in those jurisdictions.

## FORWARD-LOOKING STATEMENTS

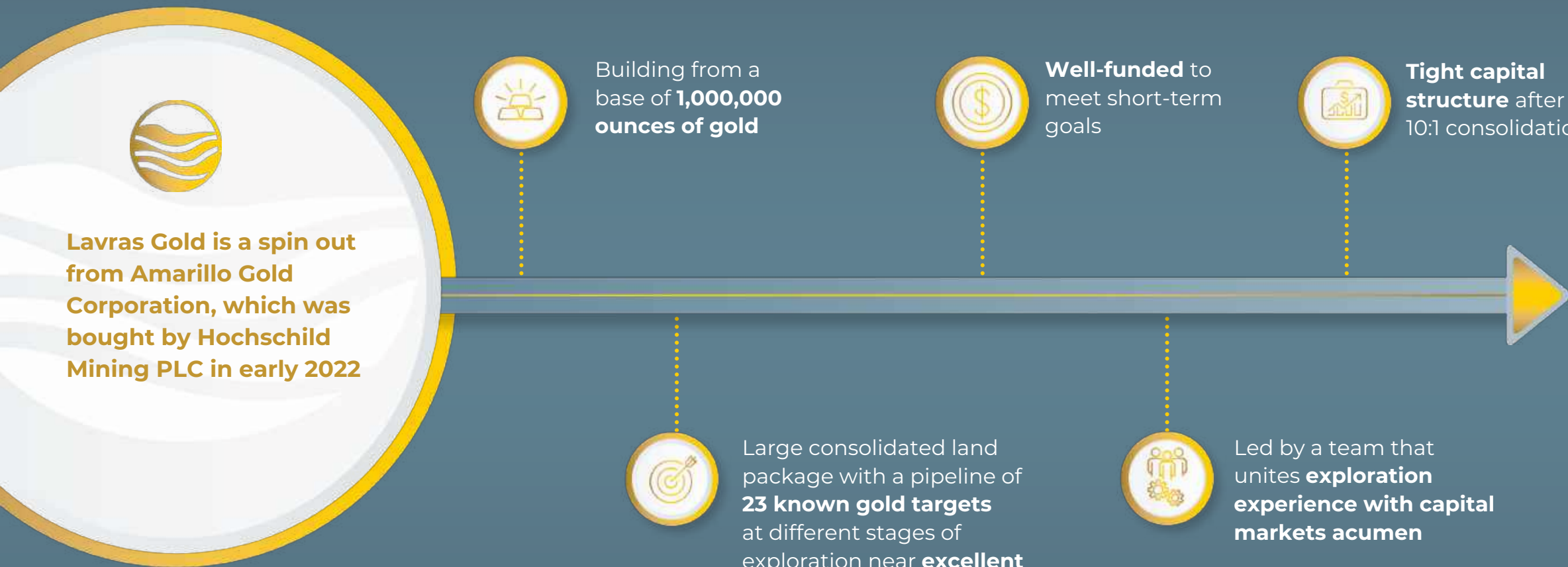
This slide deck contains forward-looking statements. The information in these statements has been based on a number of assumptions that may prove to be incorrect and the actual results may vary.

## QUALIFIED PERSONS

The Qualified Person for Lavras Gold is Michael C. Durose, M. Sc., P. Geo.



# A FRESH TAKE ON A HISTORIC GOLD MINING CENTRE IN SOUTHERN BRAZIL





# LEADERSHIP TEAM

## GROUNDING IN THE MINERAL RESOURCE SECTOR



### MICHAEL DUROSE

Director, President, and CEO

- Professional Geologist (P.Geo., Ontario); MSc in mineral economics from Queen’s University (Ontario) and graduate diploma in environmental engineering from McGill University (Quebec)
- Highly-ranked financial analyst who has worked in the capital markets for more than 25 years; travelled extensively visiting mining and exploration projects around the globe
- Before joining capital markets, worked as an exploration geologist in Canadian gold and base metal industries
- Founder and CEO, Durose Asset Management Inc.; previously held increasingly senior positions as a mining analyst at Scotia Capital Inc., Morgan Stanley, Bunting Warburg, and Nesbitt Burns

### ROLLY ULOTH

Chairman

- President and co-founder, Rosedale Transport
- Previously President and CEO, Wesdome Gold Mines (2007-2009, 2013-2016)

### PAULO SERPA

Country Manager

- 35 years developing mines, including three years at Yamana Gold, country manager Amarillo Gold
- Extensive experience in governmental relations and permitting
- From Rio Grande do Sul
- BSc in mining engineering, MBA

### HEMDAT SAWH

Chief Financial Officer

- Previously CFO at Amarillo Gold, Wesdome Gold Mines, Scorpio Mining, Crystallex, Goldbelt Resources
- 16 years at Grant Thornton LLP, culminating in Principal Certified Professional Accountant with MBA in accounting, BSc in geology, graduate diploma in geology

### ANNEMARIE BRISSENDEN

Investor Relations

- 25 years in the mining industry
- Previously led IR at Amarillo Gold, Dalradian Resources, North American Palladium, and Excellon Resources
- Certified professional in Investor Relations, BA in English Literature

## BOARD OF DIRECTORS

DAVID BIRKETT

DAVID LAING

LAWRENCE LEPARD

MIKE MUTCHLER

ROSTY RAYKOV



# 10:1 SHARE CONSOLIDATION TO CREATE TIGHT CAPITAL STRUCTURE

## TSX-V LGC

Share price (June 9, 2022)	C\$0.55
Shares outstanding	41,103,800
Options at weighted average price of C\$0.50	1.5 million
Cash (as at April 1, 2022)	C\$10 million


Strong support from major shareholders including Equity Management Associates (run by director Lawrence Lepard), Eric Sprott, 683 Capital, Brigade, Solas, Ruffer, and Sun Valley Gold.




**2% NSR royalty on Mara Rosa exploration ground that we acquired from the Amarillo Gold spinout**



# LDS PROJECT A HIGHLY PROSPECTIVE PROPERTY

 4.5 Hours southwest  
of **MAJOR CITY OF  
PORTO ALEGRE**

 **EXCELLENT  
INFRASTRUCTURE:**  
tarmac roads, power,  
water, etc.

 Vast consolidated  
land position of  
**22,000 HECTARES**

 **HISTORICAL  
WORKINGS** that  
date to the 1700s

**LAVRAS DO SUL PROJECT**  
Exploration Stage

Porto Alegre



# GOAL IS TO REALIZE THE POTENTIAL OF THIS UNIQUE SYSTEM



Exploration to date suggests that LDS is primarily an **INTRUSIVE HOSTED GOLD SYSTEM LIKELY OF ALKALINE AFFINITY WITH EPITHERMAL AND PORPHYRY CHARACTERISTICS**



Epi-Syenite from the Butia Prospect, Lavras do Sul, Brazil.

CHARACTERISTICS OF ALKALINE GOLD COPPER SYSTEM		LDS PROJECT
Oxidized, s-poor, volatile-rich melts		✓
High gold to silver ratios		✓
Tellurides common		sometimes
Intense High-T K-metasomatism overprinted by Lower-T epithermal alteration		✓
Gold transport by H <sub>2</sub> S		✓
Acid-style alteration weak or missing		✓
Pathfinder elements include arsenic, mercury, tellurium, tungsten, titanium, selenium, vanadium		mostly
Characteristic accessory minerals include:	Roscoelite (v-mica)	
	Fluorite	✓
	Barite	✓
Exhibit extensive vertical mineralization		✓

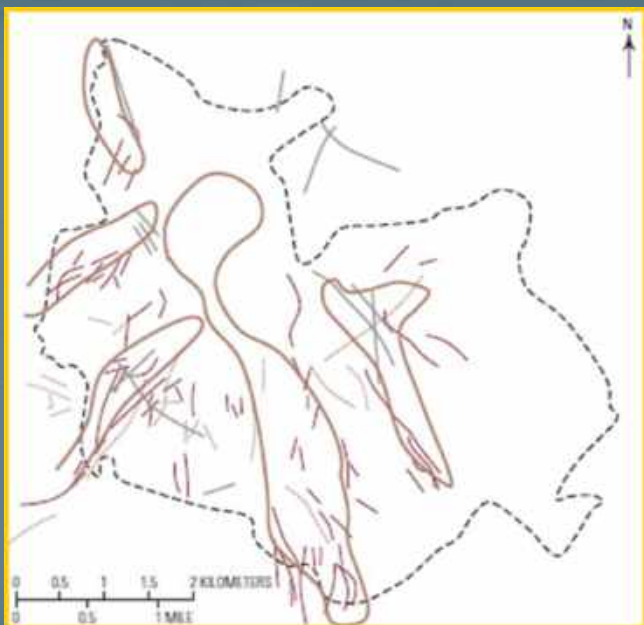


# ALKALINE GOLD COPPER SYSTEMS CAN BE LARGE AND HIGH GRADE

## CRIPPLE CREEK

Colorado (Newmont)

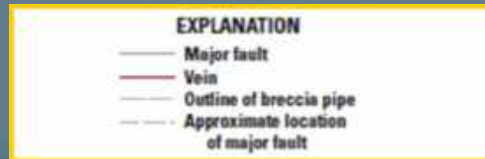
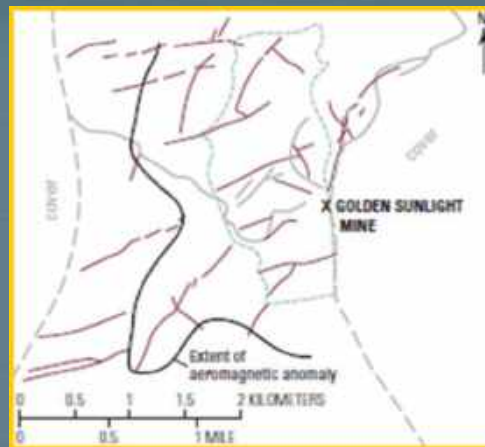
**25.6M ounces gold<sup>1</sup>**



## Golden Sunlight

Montana (Barrick)

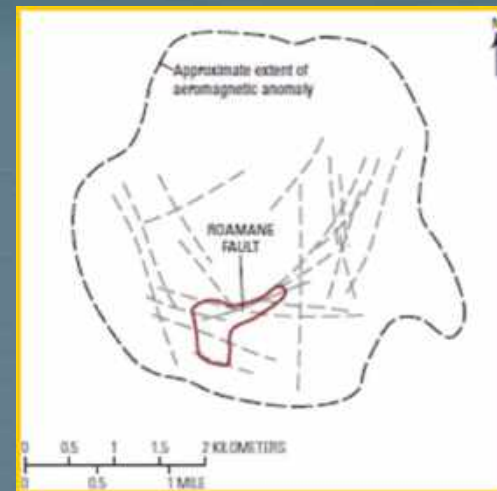
**3.4M ounces gold<sup>1</sup>**



## Porgera

Papua New Guinea (Barrick)

**26.3M ounces gold<sup>1</sup>**



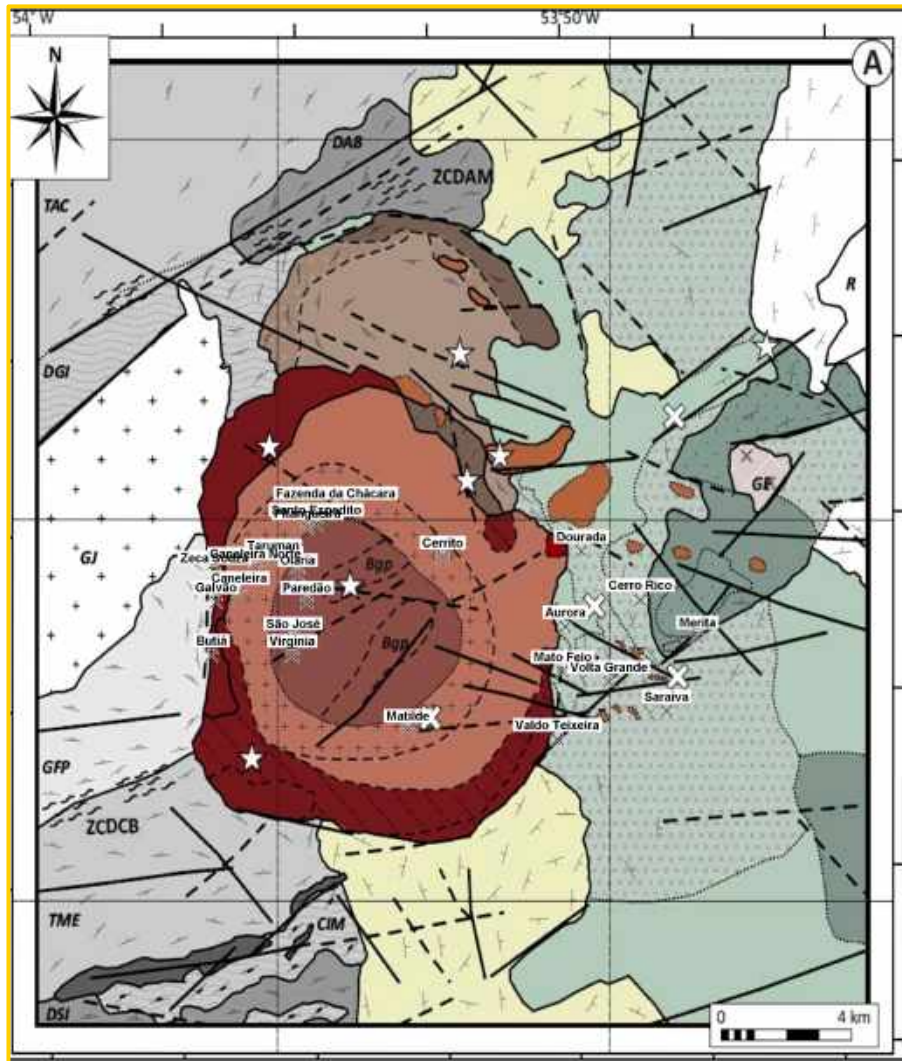
<sup>1</sup> Best estimates of gold resources; based on publicly available information. Diagrams from USGS Publication Alkalic-Type Epithermal Gold Deposit Model 2010-5070-R.

<sup>1</sup> Gold resource estimated based on publicly available information. Diagrams from USGS Publication Alkalic-Type Epithermal Gold Deposit Model 2010-5070-R





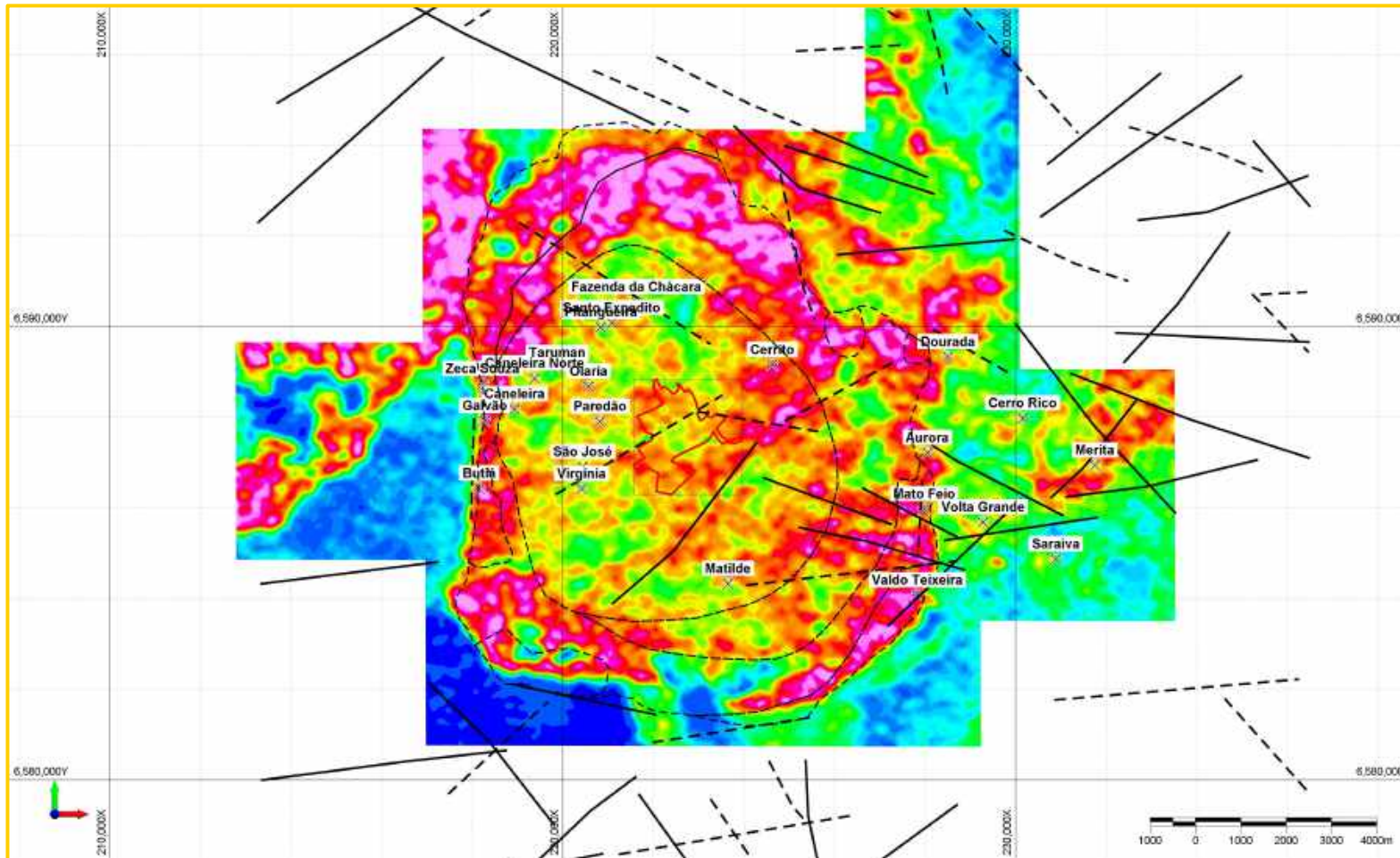
# GEOLOGY OF THE LAVRAS DO SUL INTRUSIVE COMPLEX (LDIC)



- LDIC measures approximately 10 km in diameter
- Central core of granodiorite and monzogranites are rimmed by monzogranites and syenogranites
- The outer border facies consists of perthitic alkaline granites and locally syenogranites
- Gold occurrences occur throughout the intrusive and into the volcanic rocks of the Hilario Formation
- Intersecting northeast, northwest, and east-west structures acted as channelways for gold-bearing fluids; these are prime exploration targets



# GOLD SHOWINGS ARE DISTRIBUTED THROUGHOUT LAVRAS DO SUL INTRUSIVE COMPLEX (LDIC)



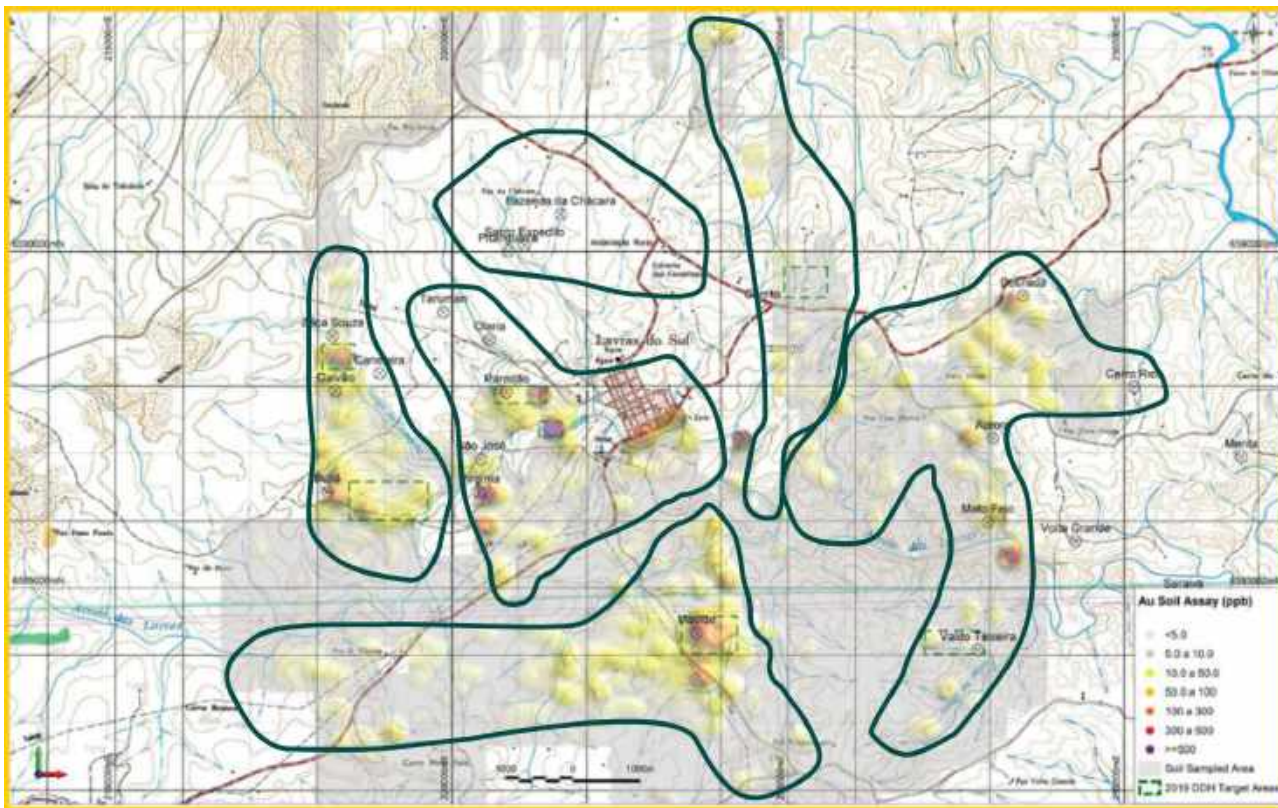
- Location of gold mineral occurrences relative to regional-scale airborne potassium anomalism
- Northeast, northwest, and east-west structures that intersect circular ring features are prime exploration targets
- Potassic alteration is evidence of the alkaline affinity of gold mineralization



# APPLYING A SUSTAINED AND TECHNICALLY BASED EXPLORATION PROGRAM



**PIPELINE OF 23 KNOWN GOLD TARGETS AT DIFFERENT STAGES OF EXPLORATION** distributed through intrusion that's 10 kilometres in diameter



Mineral endowment of **1 MILLION GOLD OUNCES** to date from two most advanced targets:

## BUTIÁ

NI 43-101 resource of approximately 500,000 ounces

## CERRITO

NI 43-101 resource of approximately 500,000 ounces

- 12,000-metre diamond drill program underway with two drills onsite; focus is on Matilde, Matilde Extension, Zeca Souza, and possibly Caneleira
- Matilde target shaping up to add more ounces with more drilling
- Zeca Souza results are very encouraging



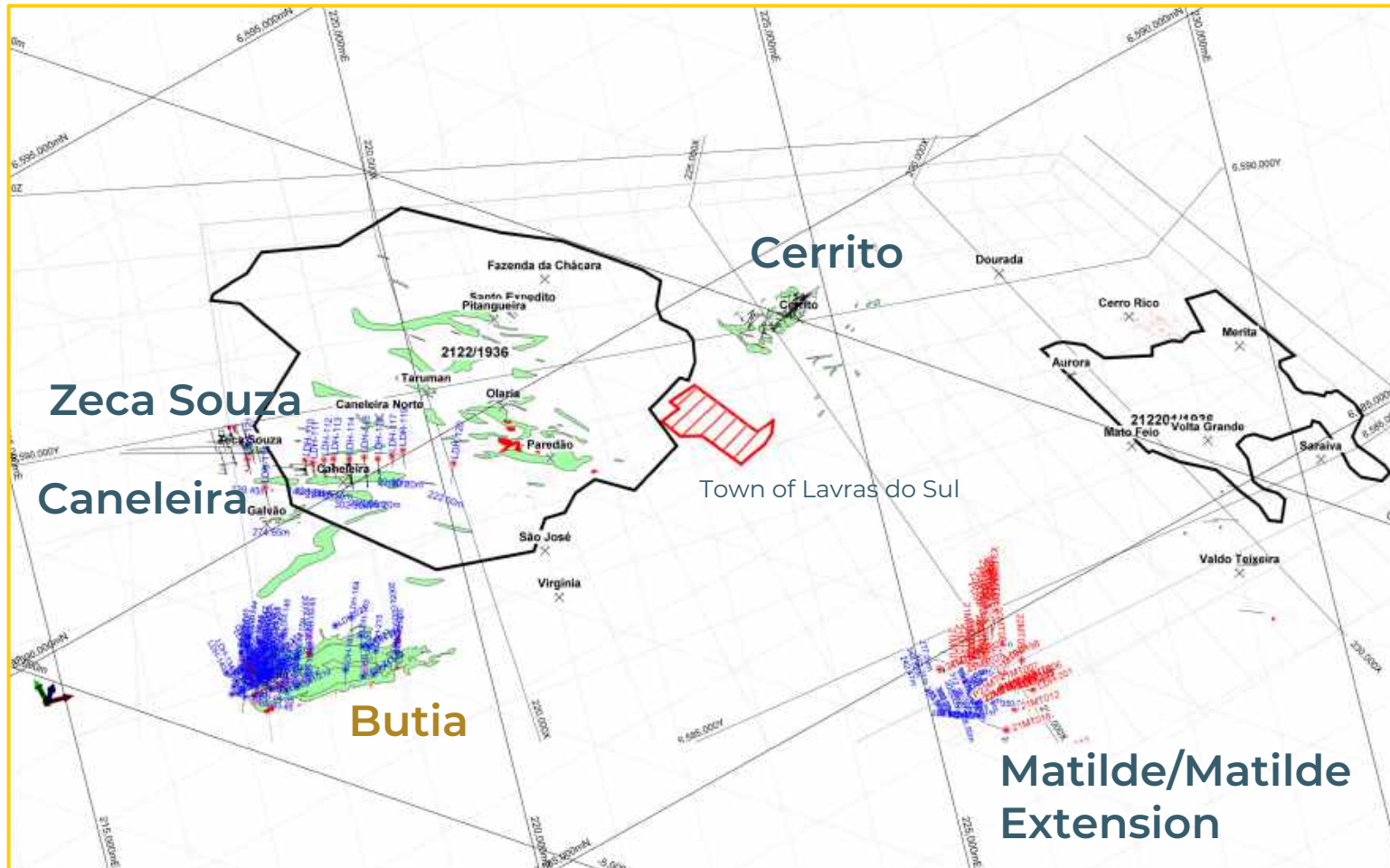
# LDS EXPLORATION PIPELINE OF 23 GOLD OCCURENCES



SURFACE GEOLOGY STAGE	EXPLORATION DRILLING STAGE	RESOURCE DELINEATION STAGE
<p>Aurora Fazenda da Chácara Mato Feio Merita Olaria Paredão Pitangueira Santo Expedito São José Saraiva Taruman Virgínia Volta Grande</p>	<p><b>Caneleira</b> Cerro Rico Dourada Galvão <b>Matilde</b> <b>Matilde Extension</b> Valdo Texeira <b>Zeca Souza</b></p>	<p>Butiá Cerrito</p>

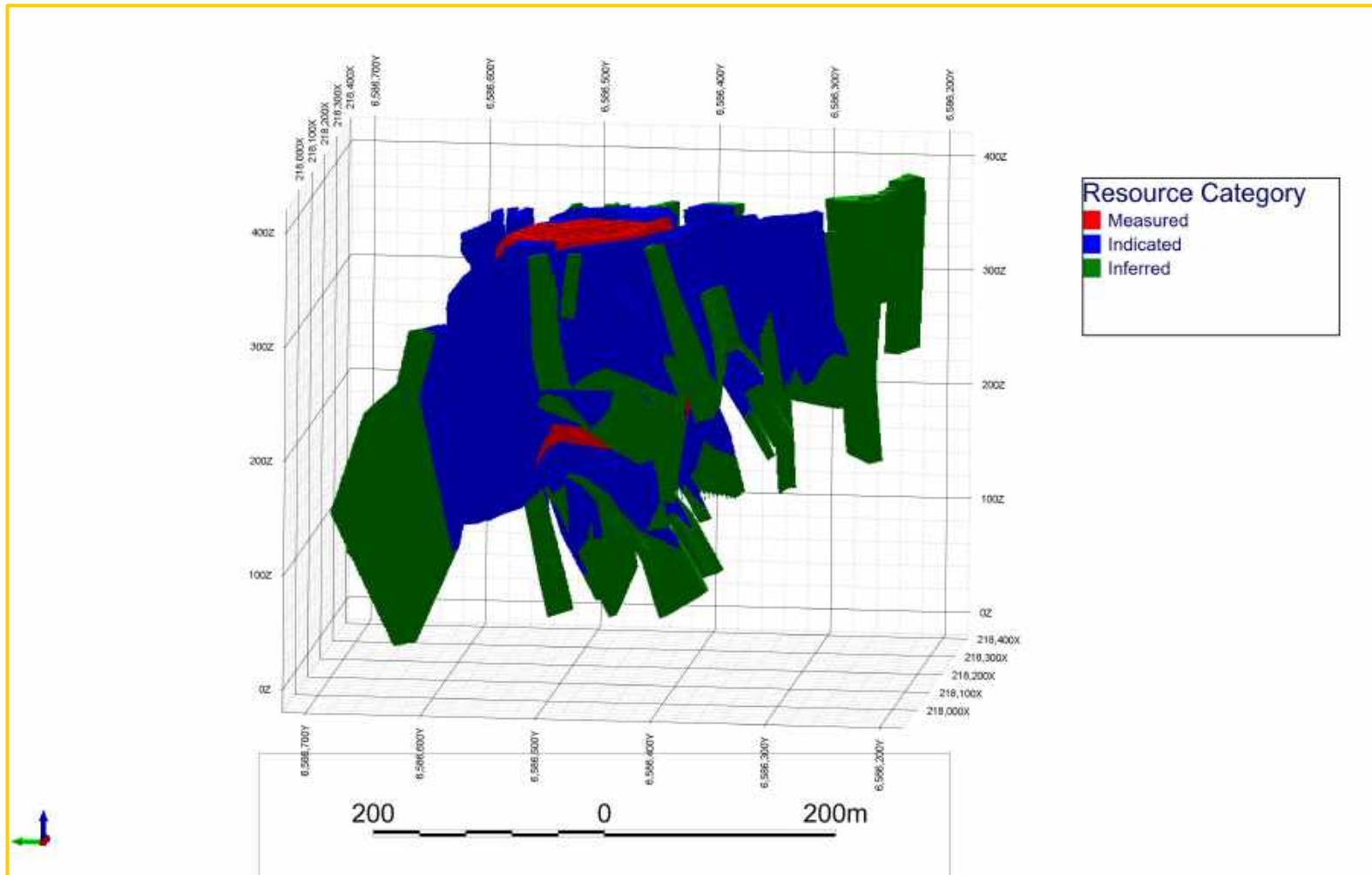


# LOCATION OF BUTIÁ PROSPECT





# BUTIÁ: OPEN FOR EXPANSION AT DEPTH AND ALONG STRIKE



- Completed approximately 20,243 metres of drilling of 78 drill holes
- Mineralization begins at surface and confirmed to a vertical distance of 250 metres where it remains open
- Gold occurs along structures within perthitic hydrothermally altered granite
- Open for expansion at depth and along strike



# BUTIÁ GOLD RESOURCE OF 500,000 OUNCES

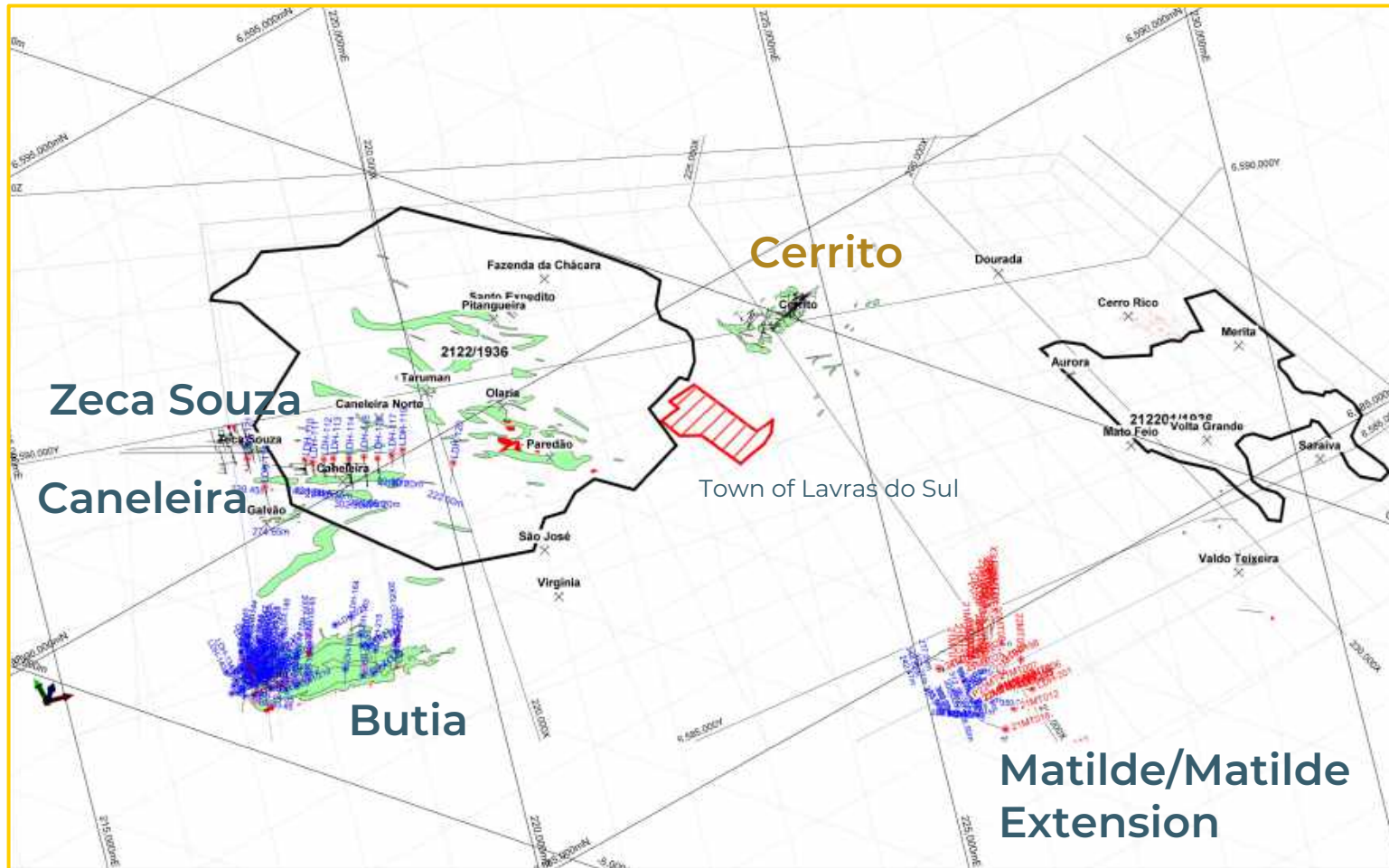
RESOURCES	TONNES	GRADE (g/t gold)	CONTAINED GOLD (ounces)
Measured	4,643,075	0.88	131,789
Indicated	8,273,748	0.92	244,962
Total Measured and Indicated	12,916,823	0.91	376,751
Inferred	3,676,002	0.97	114,147

#### Notes

- Mineral resources are not mineral reserves and do not have demonstrated economic viability. There is no certainty that all or any part of the mineral resources estimated will be converted into mineral reserves
- Assumes a gold cut-off grade of 0.3 g/t
- High grade samples were cut to a gold grade of 5.55 g/t; capped results are being shown
- The report is called *NI 43-101 Technical Report Mineral Resource for Butiá Gold Prospect* and dated and effective January 25, 2022. It was prepared by VMG Consultoria e Soluções Ltda. for Lavras Gold Corp. and is available on [www.sedar.com](http://www.sedar.com) under Lavras Gold's issuer profile.



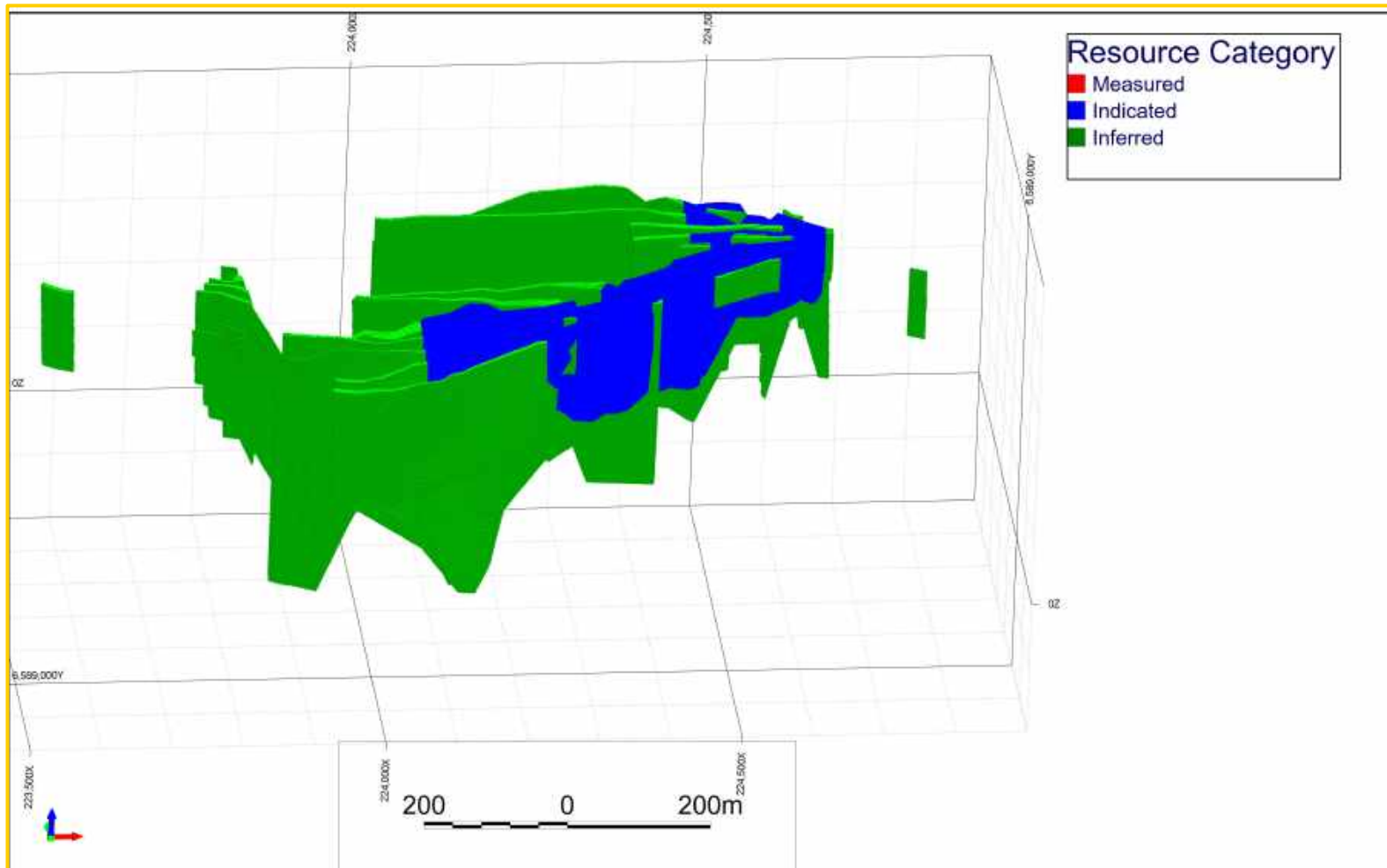
# LOCATION OF CERRITO PROSPECT







# CERRITO: OPEN FOR EXPANSION AT DEPTH AND ALONG STRIKE



- Completed approximately 14,593 metres over 93 drill holes
- Drilled over a strike length of 1300 m and to a vertical distance of 425 metres
- Gold occurs along structures within hydrothermally altered monzogranites
- Deposit remains open along strike and at depth



# CERRITO GOLD RESOURCE OF 500,000 OUNCES



RESOURCES	TONNES	GRADE (g/t gold)	CONTAINED GOLD (ounces)
Indicated	8,249,225	0.70	186,870
Inferred	13,157,478	0.69	291,605

#### Notes

- Mineral resources are not mineral reserves and do not have demonstrated economic viability. There is no certainty that all or any part of the mineral resources estimated will be converted into mineral reserves
- Assumes a gold cut-off grade of 0.3 grams per tonne (g/t)
- High grade samples were cut to a gold grade of 3.07 g/t; capped results are being shown
- Numbers may not sum due to rounding
- The qualified person for the resource estimate is Volodymyr Myadzel of VMG Consultoria e Soluções Ltda.
- This estimate should be read in conjunction with the full report, which will be filed on [www.sedar.com](http://www.sedar.com) under the company's profile when it is finalized.



# CERRITO TYPICAL MINERAL ASSOCIATIONS

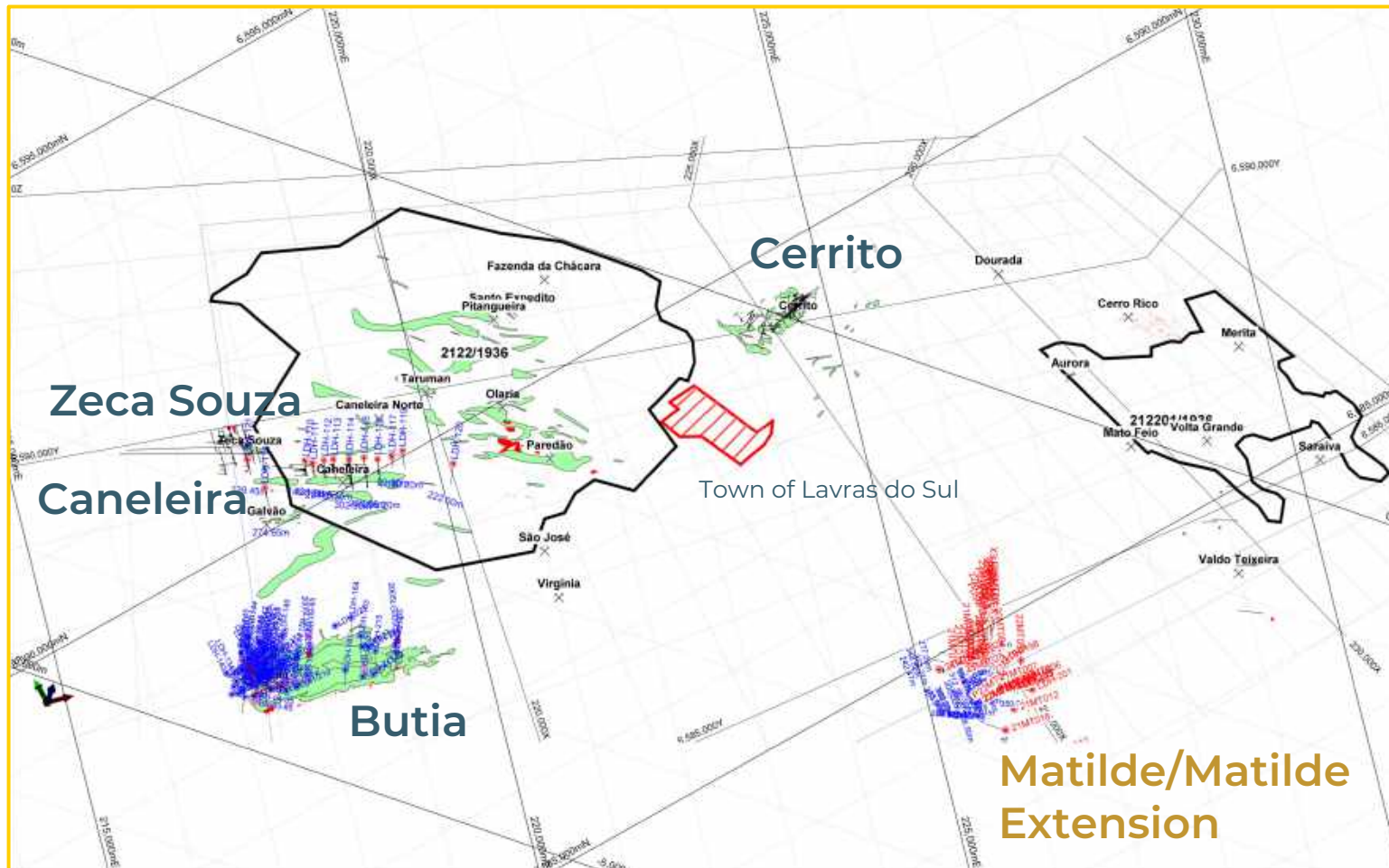


Gold typically occurs in pyrite that is found in a matrix of silica and sericite

- Typical mineral associations include quartz-flooded structures and veins with hematite, sericite and disseminated pyrite
- Other less frequent minerals include galena, sphalerite, molybdenite, arsenopyrite, fluorite and visible gold
- Requires follow up drilling to test for extensions to mineralization and convert inferred resources into measured and indicated



# LOCATION OF MATILDE/MATILDE EXTENSION





# MATILDE EXPLORATION DELIVERS **LONG CONTINUOUS GOLD INTERCEPTS IN DRILL CORE**



Gold typically occurs in pyrite that is found in a matrix of silica and sericite

- Completed approximately 9,330 metres over 32 drill holes so far
- Gold in soil anomaly occurs along a 3 kilometre long east-west structural corridor with hydrothermally altered monzogranites
- Drilling has confirmed primary gold mineralization across 175 metres of strike length and to depth of 375 metres
- Primary minerals like sericite, quartz, pyrite, and hematite suggest we may be in a phyllic alteration zone



# MATILDE DELIVERS **VISIBLE GOLD** IN DRILL CORE



**Visible gold** in quartz carbonate veinlet

## Best holes:

- 20\_MT001 – 62.5 metres grading 0.62 g/t gold including
  - 12.8 m grading 0.89 g/t gold from 191.48 metres
  - **14 m grading 1.13 g/t gold** from 184 metres
- 20MT\_002 – 144.60 metres grading 0.69 g/t gold including
  - 91.6 metres grading 0.87 g/t gold from 170.0 metres
  - 9 metres grading 1.02 g/t gold from 172.0 metres
  - 27 metres grading 1.04 g/t from 184 metres

- **Visible gold** was observed in drill hole 20\_MT-002, which returned **0.6 metres at 30.9 g/t gold from 261 metres** and ended in a **lamprophyre dike**



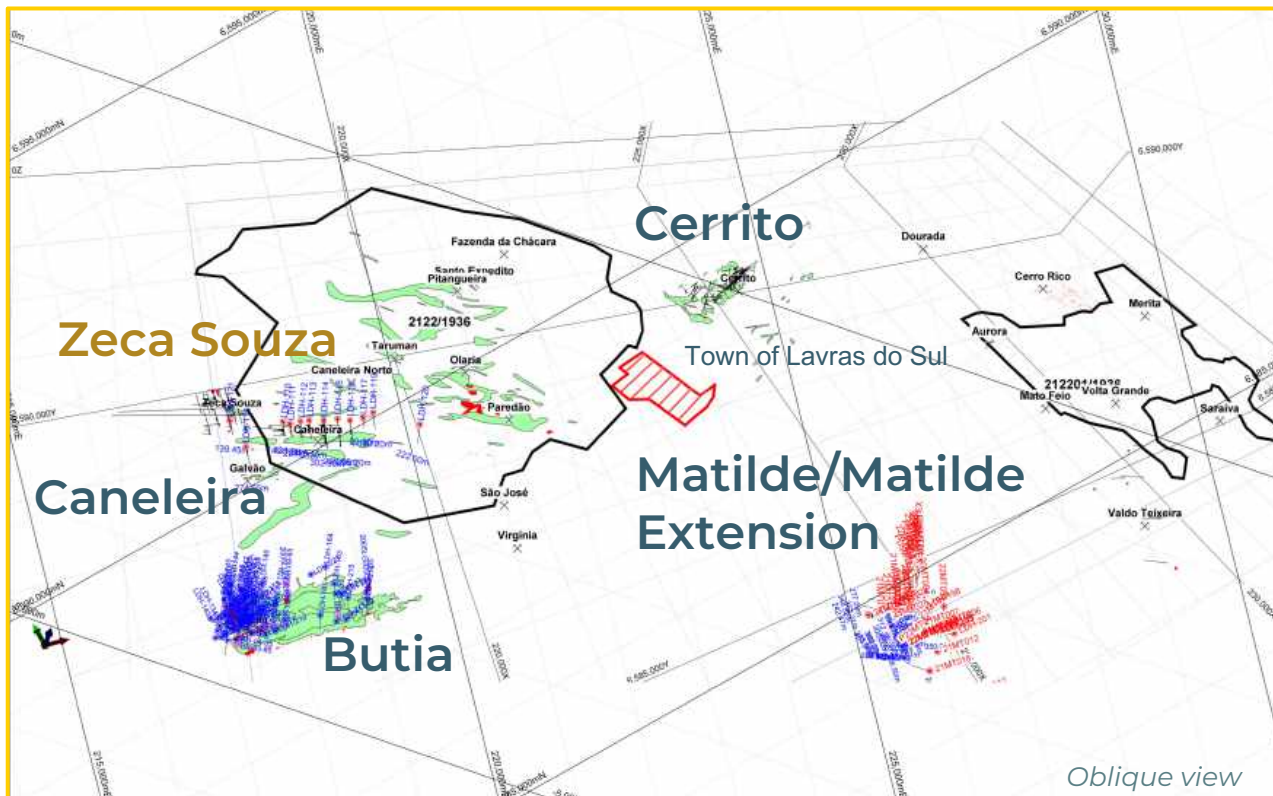
# ZECA SOUZA

## FOCUS IS ON FOLLOWING UP ON HISTORICAL RESULTS



**NEW GOLD SYSTEM** is being defined about 1.5 kilometres north of Butiá; results are pending

**GOAL: TEST FOR PARALLEL GOLD STRUCTURES ALONG EAST-WEST STRIKE LENGTH OF TARGET**



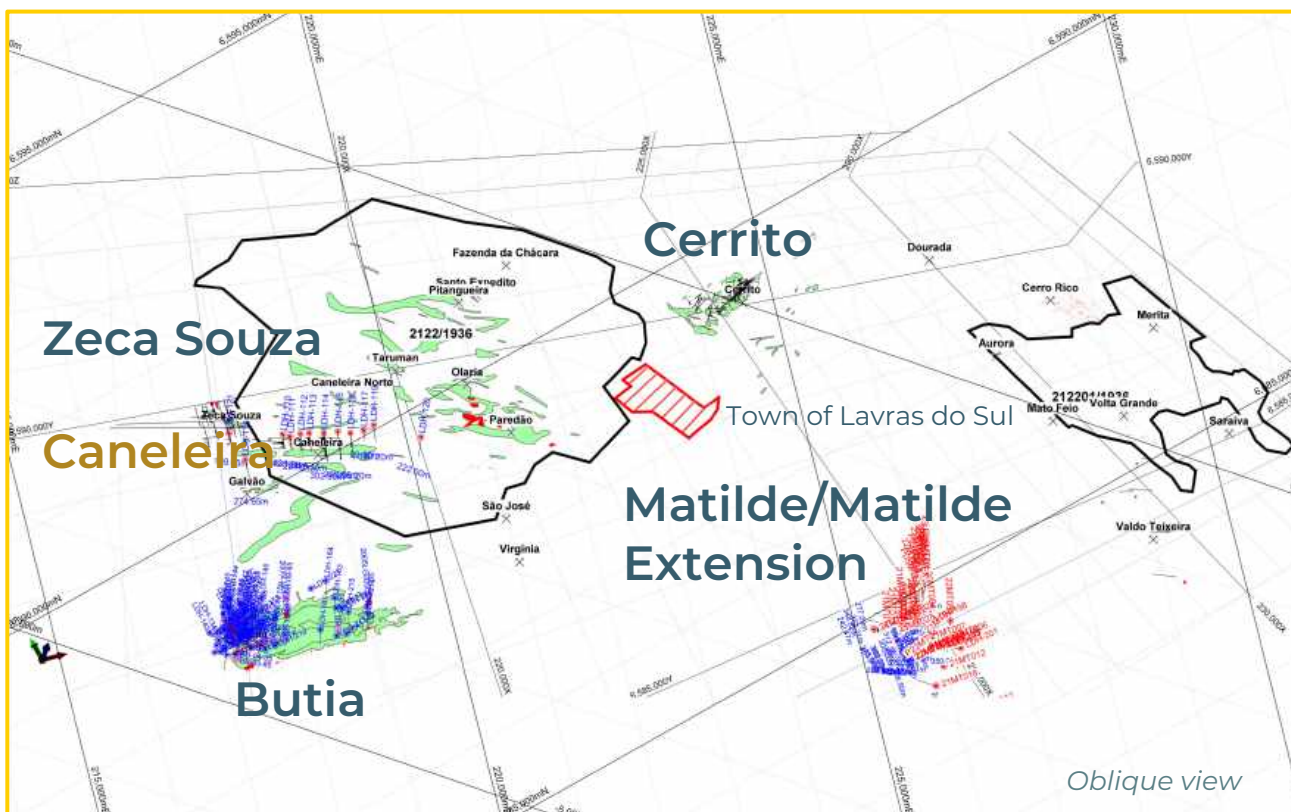
- Approximately 2,770 metres of drilling over 14 drill holes have been drilled
- Holes are drilled to a vertical distance of 250 metres
- Following up on encouraging historical results and old surface diggings



# CANELEIRA FOCUS IS TO TEST STRIKE EXTENSION

Follow up drill required to refine definition and understanding of the **GEOMETRY OF THE GOLD SYSTEM AND UNDERSTAND ITS RELATIONSHIP TO ZECA SOUZA**

GOAL: **EVALUATE STRIKE EXTENSION AND DEPTH POTENTIAL OF KNOWN MINERALIZATION**

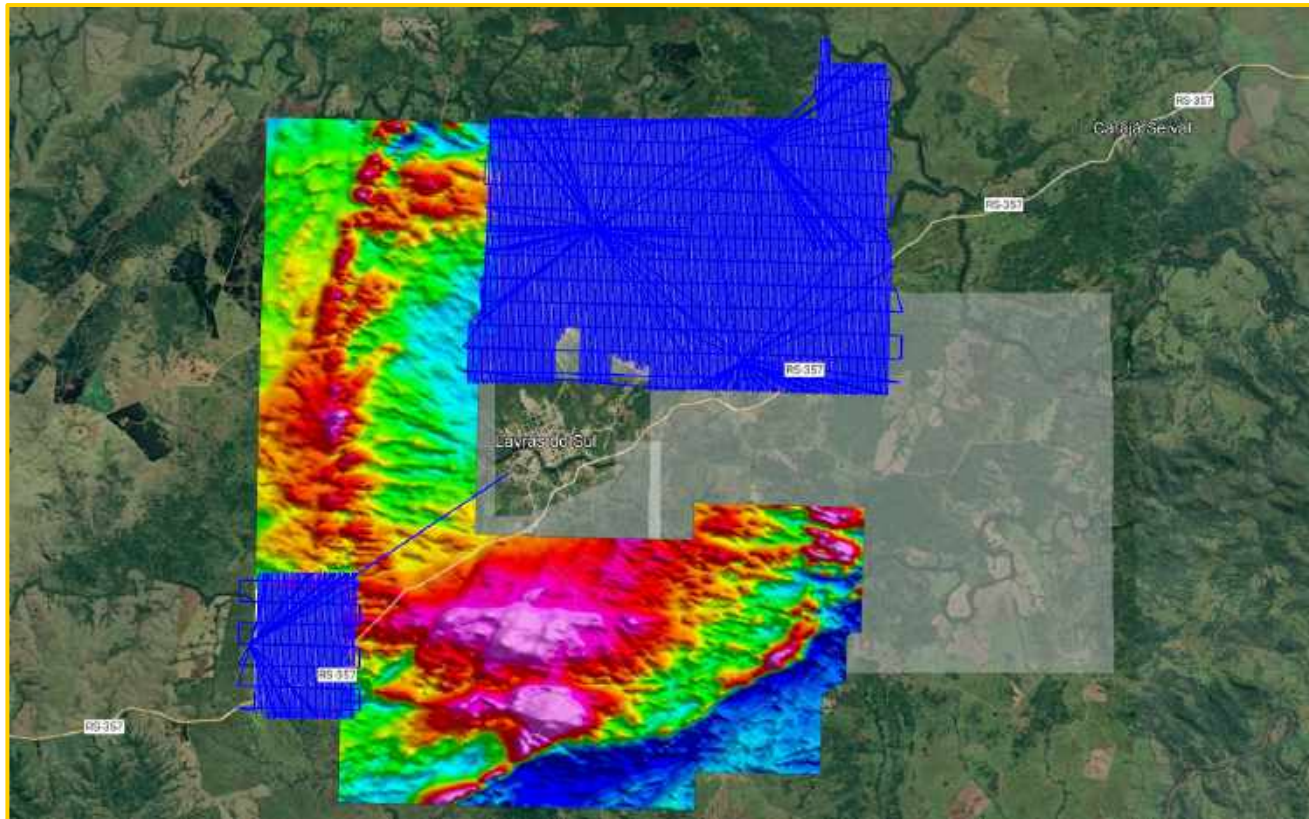


- Potential 3,000 metres of drilling over 12 holes is tentatively planned
- Holes are drilled to a vertical distance of 250 metres
- Historical drilling and sampling confirms zone of gold mineralization and alteration over at least 1 kilometre
- Best intercepts include 36.1 metres grading 1.42 g/t gold from 70.4 metres





# OTHER WORK INCLUDES A DETAILED REVIEW OF GEOLOGIC DATA, AEROMAGNETIC SURVEY



GOAL: GUIDE SELECTION OF NEW DRILLING TARGETS IN AREAS THAT HAVE NEVER BEEN EVALUATED

- Approximately 54,000 metres over 227 holes have been completed on the property so far
- Large historical database of geological mapping, airborne magnetics, rock geochemistry, ground geophysics, and trenching
- A drone aeromagnetic survey will be flown over up to 3,357-line kilometres covering 40% of the property that has not previously been flown



# EXPLORATION POTENTIAL OF LAVRAS DO SUL IS EXTREMELY SIGNIFICANT



Exploration suggests LDS may be an alkaline gold system

Starting with gold resources of 1 million ounces from 2 known mineral occurrences

Alkaline gold copper systems can be large and high grade

23 known targets scattered through intrusive complex that is 10 kilometres in diameter



Scale of known gold showings is on par with other large-scale alkaline gold systems

# LAVRAS GOLD



Follow us [@LavrasGold](#)  
on LinkedIn, Twitter, and YouTube

[www.lavrasgold.com](http://www.lavrasgold.com)  
[+1-416-844-6284](tel:+14168446284)